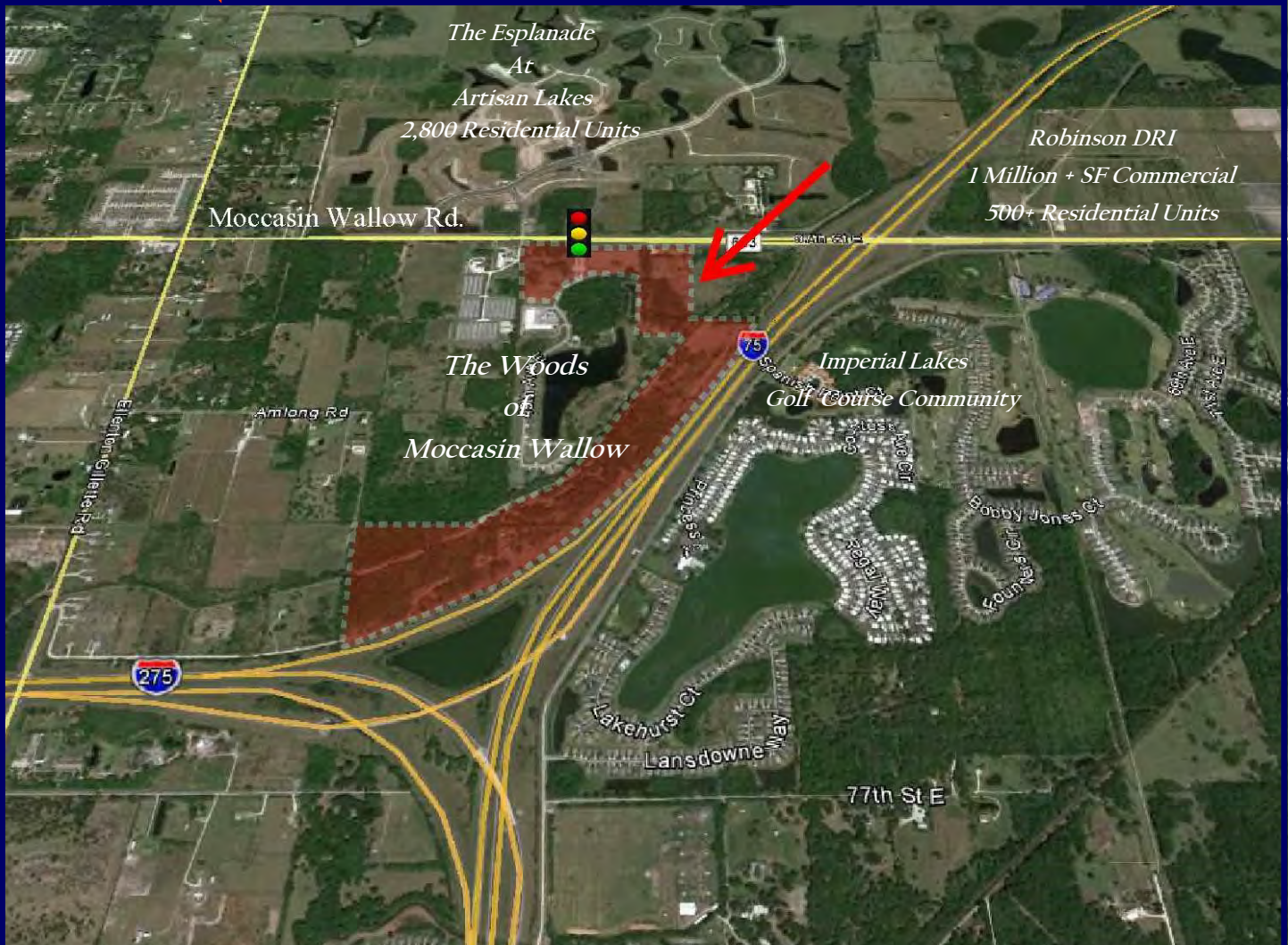


Retail / Business Sites

Moccasin Wallow & I-75

Manatee County, FL

PRIMERICA
GROUP ONE, INC.



The Woods Of Moccasin Wallow

“AT THE CENTER OF IT ALL”

- ◆ Located at the Fully signalized Intersection of 96th Street E. & 49th Avenue E, Manatee County, FL
- ◆ Major Residential Growth Corridor including 2900 homes in The “Woods” and “Artisan Lakes”
- ◆ Easy On/Off Full Interchange Access to I-75 / 2014 AADT Over 75,000
- ◆ Easy access to Sarasota (20 minutes), Downtown St. Pete. (25 minutes) and Tampa, (30 minutes)

813.933.0629

George Trujillo Ext. 203

gtrujillo@primericagroupone.com

Carol Smiddy Ext. 201

csmiddy@primericagroupone.com